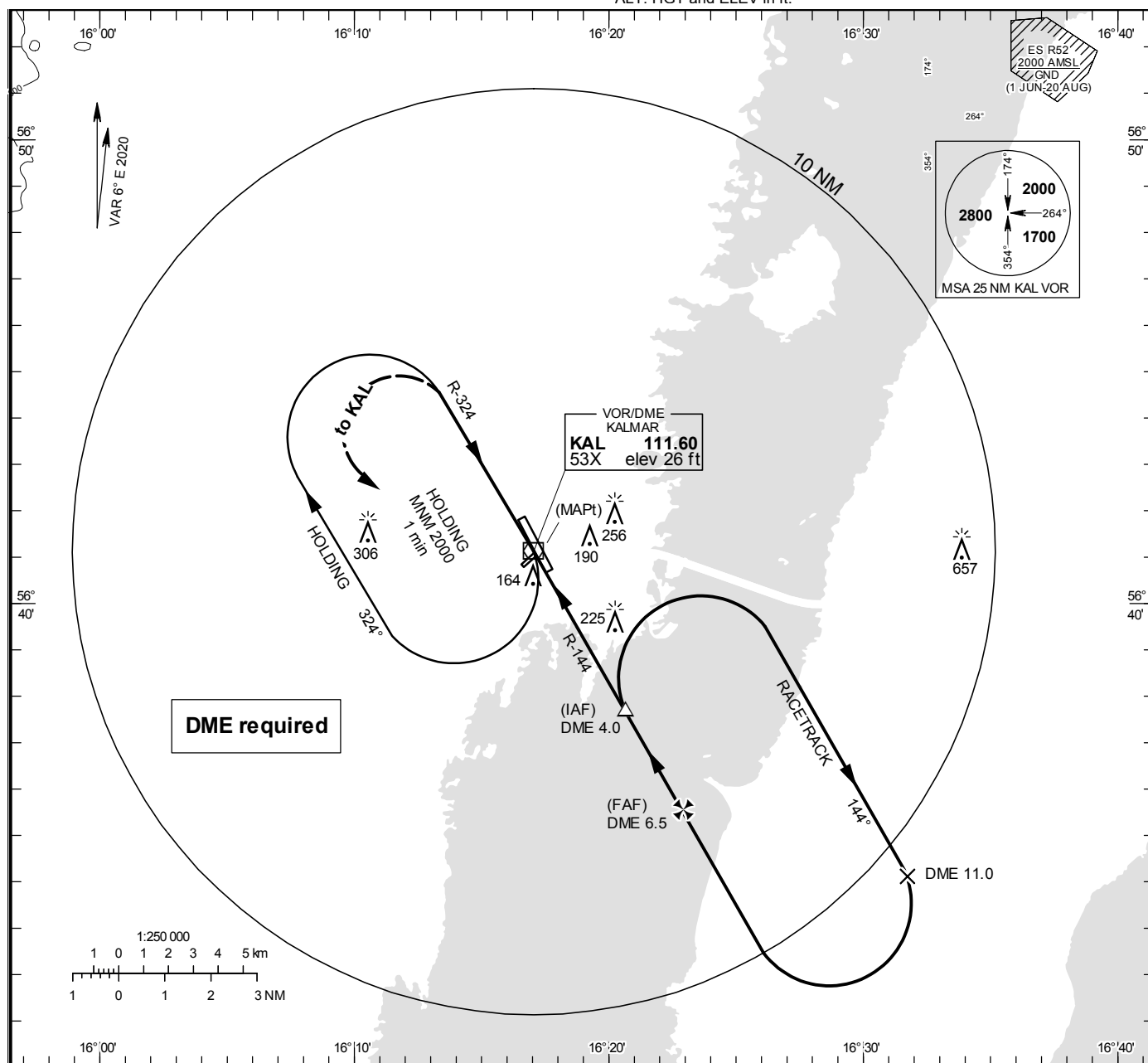


**KALMAR**  
**VOR RWY 34**

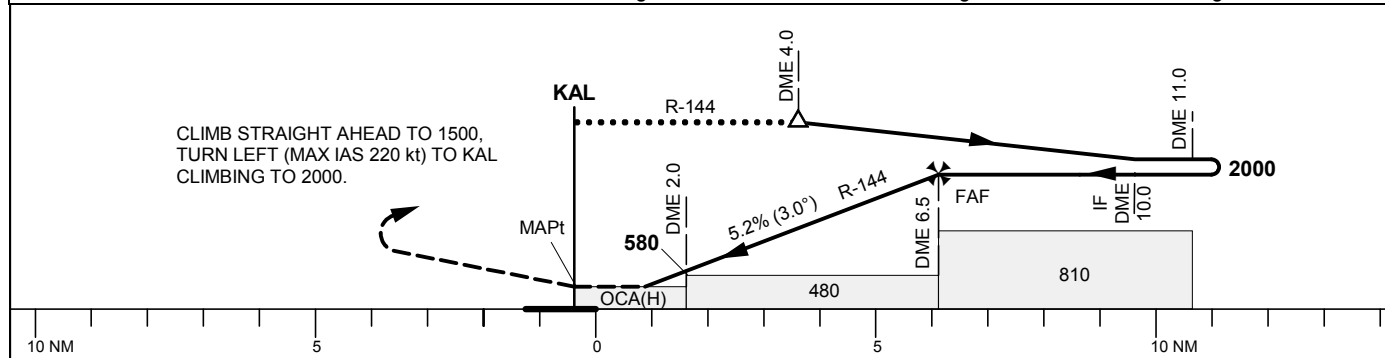
KALMAR TOWER 130.805

**THR ELEV 16 ft, AD ELEV 18 ft**  
OCH are related to THR.  
Circling OCH are related to AD ELEV.  
BRG are MAG  
ALT. HGT and ELEV in ft.

**INSTRUMENT  
APPROACH  
CHART – ICAO**



TA 5000 ft AMSL Final APCH line offset 2° Circling MAX IAS 200 kt \*Timing not authorized for defining the MAPt



OCA (H)					Final approach		Distance FAF-MAPt 6.5 NM*				
Cat of ACFT	A	B	C	D	DME KAL NM	6	5	4	3	2	
Straight-in Approach	410(400)				ALT	1860	1540	1220	900	580	
					GS	kt	80	100	120	140	160
Circling	490(480) 560(550) 700(690) 700(690)				Time	min:s	4:53	3:54	3:15	2:47	2:26
					Rate of descent	ft/min	425	530	635	745	850

CHANGE: Editorial